



# THE FRINGE

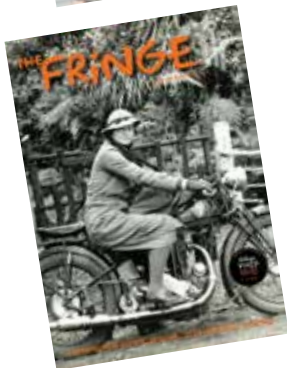
[www.fringemedia.co.nz](http://www.fringemedia.co.nz)

Published by Fringe Media Ltd. PO Box 60-469, Titirangi.



Launched at the end of 2002 the *Titirangi Tatler* became a quality monthly publication with a strong community focus. Renamed *The Fringe* at the end of 2012, the publication continues to serve the interests of its readership.

Lively, informative and entertaining, 21,000 copies are delivered free to residential and business letterboxes and selected outlets such as libraries and cafés throughout our circulation area. *The Fringe* reaches an estimated 70,000+ readers.



The circulation area includes Titirangi, New Lynn, Glen Eden, Oratia, Green Bay, Kelston, Konini, Wood Bay, French Bay, South Titirangi, Waima, Woodlands Park, Laingholm, Parau, Cornwallis and Huia – with copies also being delivered to selected locations in Blockhouse Bay, Piha, Henderson and beyond. The area includes some of West Auckland’s most affluent suburbs and continues to grow rapidly.

## Deadlines for 2020

Month of publication	Ad Bookings Close*	Material Deadline	Street Delivery Starts
February	January 16	January 21	February 1
March	February 14	February 18	February 29
April	March 13	March 17	March 28
May	April 16	April 21	May 2
June	May 15	May 19	May 30
July	June 12	June 16	June 27
August	July 17	July 21	August 1
September	August 14	August 18	August 29
October	September 18	September 22	October 3
November	October 15	October 20	October 31
December/January	November 13	November 17	November 28

*\*Note: This is also the deadline for editorial submissions.*

## To find out more contact:

**Bevis England**

Phone: 817 8024 or 027 494 0700

Email: [bevis@fringemedia.co.nz](mailto:bevis@fringemedia.co.nz)

